



Dr. LANKAPALLI BULLAYYA COLLEGE OF ENGINEERING

The Society For Collegiate Education

Affiliated to Andhra University, Approved by AICTE

52-14-75, Resapuvanipalem, Visakhapatnam - 530 013.

Ph : Off : 0891-2703293, 2703296

Email : principal@lbce.edu.in Website : www.lbce.edu.in

Criterion 4 - Infrastructure and Learning Resources

Key Indicator – 4.1 Physical Facilities

4.1.1 The Institution has adequate infrastructure and other facilities for

- a. Teaching – Learning, viz., Classrooms, Laboratories, Computing Equipment etc.
- b. ICT – enabled facilities such as Smart Class, LMS etc. Facilities for Cultural and Sports Activities, Yoga Centre, Games (indoor and outdoor), Gymnasium, Auditorium etc.

In order to achieve its mission, the institution makes sure that its physical infrastructure is available and is used to its fullest potential. The college has sufficient classrooms, laboratories with state of art equipment, computer laboratories, ICT infrastructure, library. The college also has facilities for conducting cultural activities. In order to conduct sports activities, the college has spacious ground, indoor facilities. A separate gymnasium is available in the college for improving physical fitness of students.

Classrooms: According to AICTE norms, the college has an adequate number of classrooms and laboratories for the teaching-learning process. The college has 24 class rooms in total with Wi Fi access. Each department has LCD projectors for curriculum delivery. There are two air-conditioned seminar halls with 200 seat capacity.

Laboratories and Library: The college has 23 laboratories and a Central Library with sufficient quantity of text books and reference books.

Computing and Internet facilities: Totally 260 computer systems are available with internet facility through a 1:1 Leased line with a band width of 80 Mbps. Wi-Fi is enabled for all the class rooms, seminar halls, conference halls throughout the campus.

E-Resources: Faculty members are encouraged to provide study materials of their subject in the Google Classroom, which would help the students in their learning. Online platforms like Google Classroom, Zoom have been used in order to conduct online classes and online Seminars, Faculty Development Programmes.

In order to conduct curricular activities, co-curricular activities, extra-curricular activities, Campus Recruitment Training (CRT) sessions, etc., the physical infrastructure is best utilized even after the regular college hours.

Facilities for sports activities, games (indoor, outdoor) and gymnasium: The College gives adequate importance to Sports and games. The college facilitates the students with the required equipment in their practice and motivates them to participate in both the indoor and outdoor games and sports. College has a spacious playground with provision for multiple outdoor games, such as Cricket, Football, Volleyball, Basketball etc. Facilities for Indoor games such as Table tennis, Carroms and Chess. Gymnasium are also available.

Facilities for cultural activities: DLBCE has a Literary and Cultural Committee (DLCC) for conducting various cultural activities to provide platform for the students to showcase their talents. The committee conducts Cultural activities during various college level programs such as New-year celebrations, Pongal Celebrations, Christmas, Annual Day, etc.

At the beginning of each academic year, an assessment to replace, upgrade, or augment the current infrastructure is performed based on recommendations from the Maintenance Committee, Academic Committee, heads of the departments, and system administrator, while taking into account factors such as course requirements, computer to student ratios, budget allocations etc.

Indoor Facilities:

S.NO	SPORTS
1	Table Tennis
2	Carrom
3	Chess
4	Weight Lifting and Power Lifting
5	Gymnasium



Outdoor Facilities:

Sl. No	Description	Area (meters)	Number
1	Volley Ball	147 × 74	1
2	Cricket	249 x 315 (200 Mts. Track)	1
3	Foot-Ball		
4	Hockey		
5	Athletics		
6	Kabaddi		
7	Kho-Kho		
8	Shuttle Badminton	147 x 74	1
9	Throw Ball	147 x 74	1
10	Hand-Ball	113 x 108	1
11	Basketball	79 x 77	1

Department of Basic Sciences & Humanities

LIST OF FACILITIES

S.No.	ROOM No.	FACILITY NAME
1	802	BS & H HOD ROOM
2	817 808	BS & H STAFF ROOM
3	810	Class Room - 1
4	811	Class Room - 2
5	812	Class Room - 3
6	813	Class Room - 4
7	814	Class Room - 5
8	815	Class Room - 6
9	CG -15	Engineering Physics Lab
10	CG -12	Engineering Chemistry Lab

ROOM NO	PHOTOS
<p style="text-align: center; font-size: 24pt; font-weight: bold;">802</p>	<div style="text-align: center;">  <p style="text-align: center; font-weight: bold; margin-top: 10px;">HEAD OF THE DEPARTMENT ROOM</p> </div>
<p style="text-align: center; font-size: 24pt; font-weight: bold;">817</p>	<div style="text-align: center;">  <p style="text-align: center; font-weight: bold; margin-top: 10px;">STAFF ROOM – DEPT. OF BS & H</p> </div>

808



STAFF ROOM – DEPT. OF BS & H

CLASS ROOMS

810



CLASS ROOM - 1

811



CLASS ROOM - 2

CLASS ROOMS

812



CLASS ROOM – 3

813



CLASS ROOM – 4

CLASS ROOMS

814



CLASS ROOM – 5

815



CLASS ROOM – 6

ENGINEERING PHYSICS LAB

CG-15



PHYSICS LAB



PHYSICS LAB



PHYSICS LAB

ENGINEERING CHEMISTRY LAB

CG-12



CHEMISTRY LAB



CHEMISTRY LAB



CHEMISTRY LAB



CHEMISTRY LAB

Department of Civil Engineering

LIST OF FACILITIES

S.No	ROOM No	FACILITY NAME
1	806	CIVIL Engineering Dept. HOD Room
2	804	CIVIL Engineering Dept. Staff Room
3	816	4 TH Yr Class room
4	801	3 rd Yr Class room
5	803	2 nd Yr Class room
6	813	1 st Yr class room
7		Surveying Lab
8	EG-5	Environmental Engineering Lab
9	EG-6	Transportation Engineering Lab
10	EG-1	Strength of Materials & Concrete Lab
11	EG-2	Fluid Mechanics & Hydraulic Machinery Lab
12	EG-3	Geotechnical Engineering Lab
13		Workshop
14		Drawing Lab
15		Computer Application in Civil Engineering

ROOM NO

PHOTOS

806



HEAD OF THE DEPARTMENT ROOM - CIVIL ENGINEERING

804



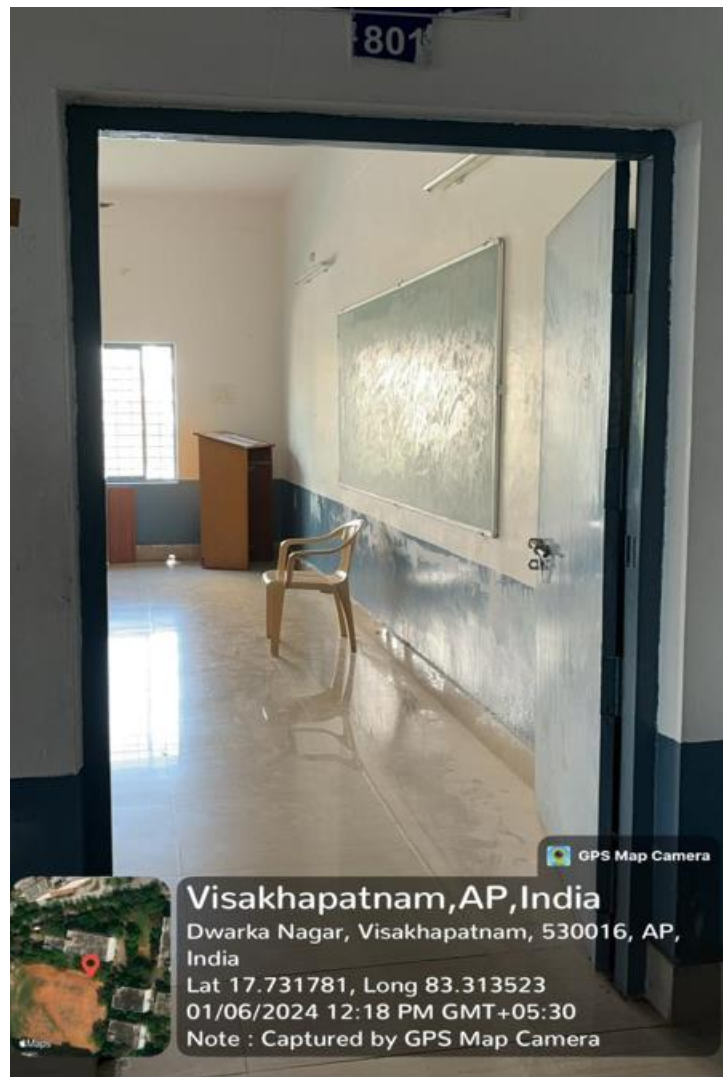
Civil Engineering Staff Room

816



CIVIL ENGINEERING FINAL YEAR CLASSROOM

801



CIVIL ENGINEERING THIRD YEAR CLASS ROOM

803



CIVIL ENGINEERING SECOND YEAR CLASS ROOM

813



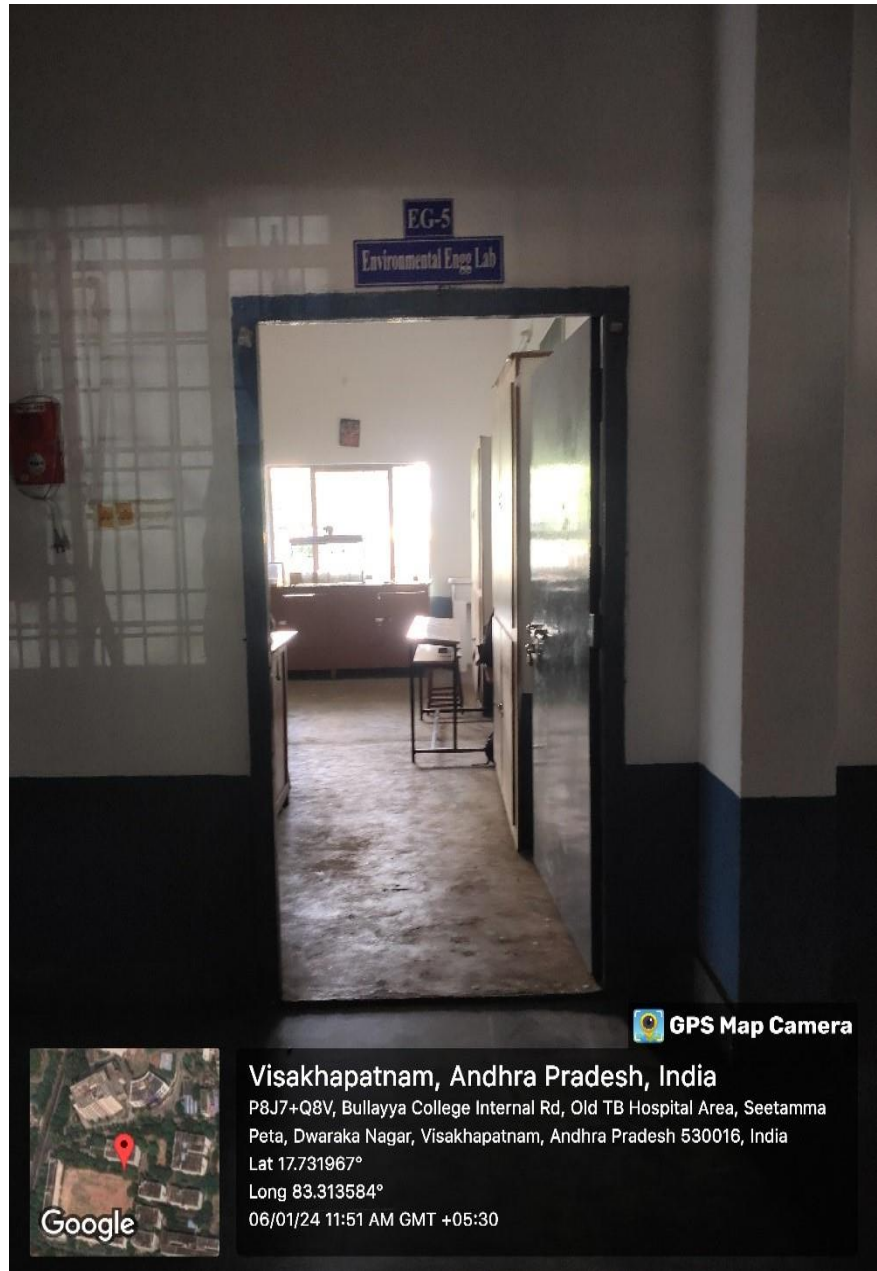
**CIVIL ENGINEERING FIRST YEAR
CLASS ROOM**

SURVEY LAB



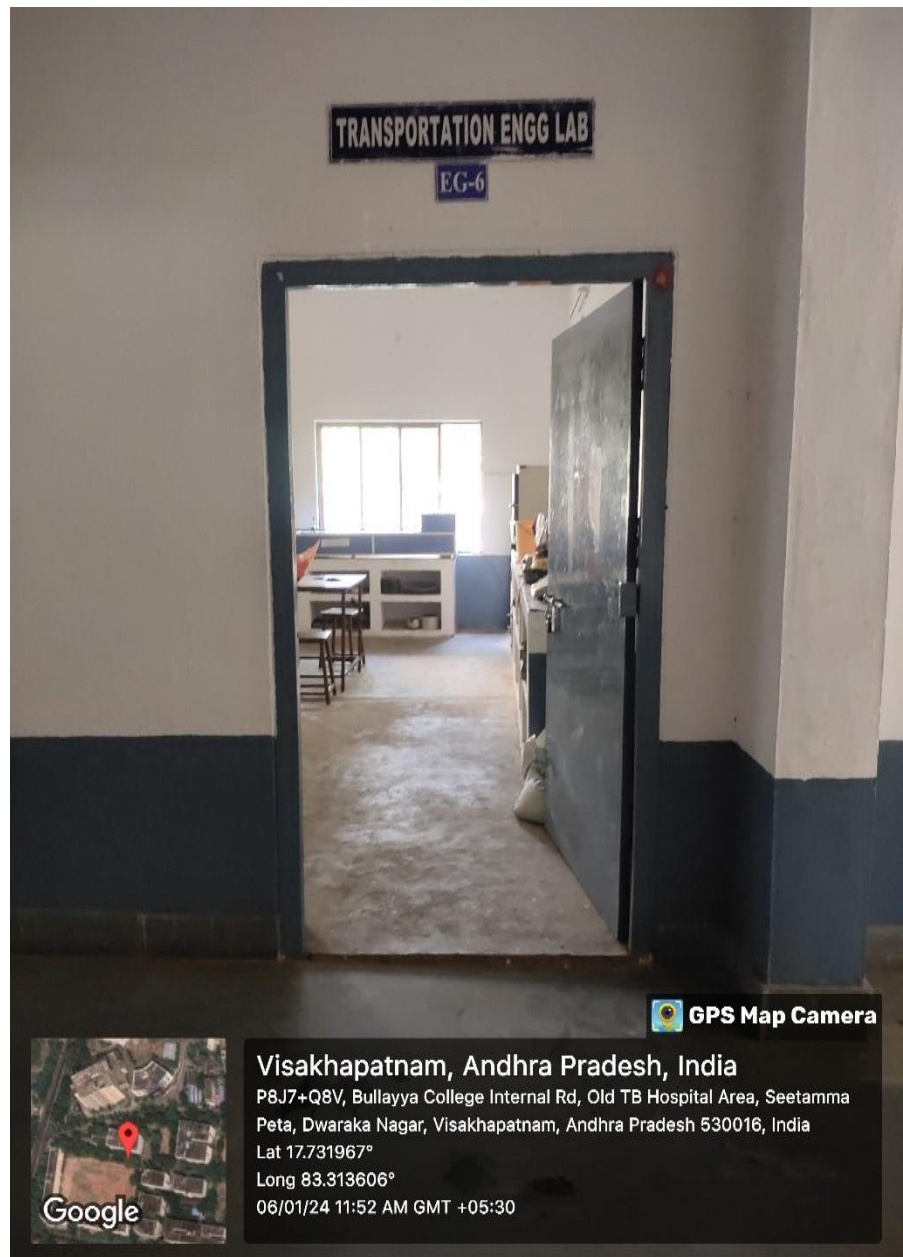
SURVEY LAB

**ENVIRONMENTAL
ENGG LAB**



ENVIRONMENTAL ENGG LAB

**TRANSPORTATION
ENGINEERING
LAB**



TRANSPORTATION ENGINEERING LAB

**STRENGTH OF
MATERIALS LAB
& CONCRETE LAB**



**STRENGTH OF MATERIALS LAB
& CONCRETE LAB**

Fluid Mechanics & Hydraulic Machinery Lab



Fluid Mechanics & Hydraulic Machinery Lab

**GEOTECHNICAL
ENGINEERING
LAB**



GEOTECHNICAL ENGINEERING LAB

Workshop



Workshop



DRAWING LAB



DRAWING LAB

**COMPUTER
APPLICATIONS IN CIVIL
ENGINEERING LAB**



**COMPUTER APPLICATIONS IN CIVIL
ENGINEERING LAB**

Department of Computer Science Engineering

LIST OF FACILITIES

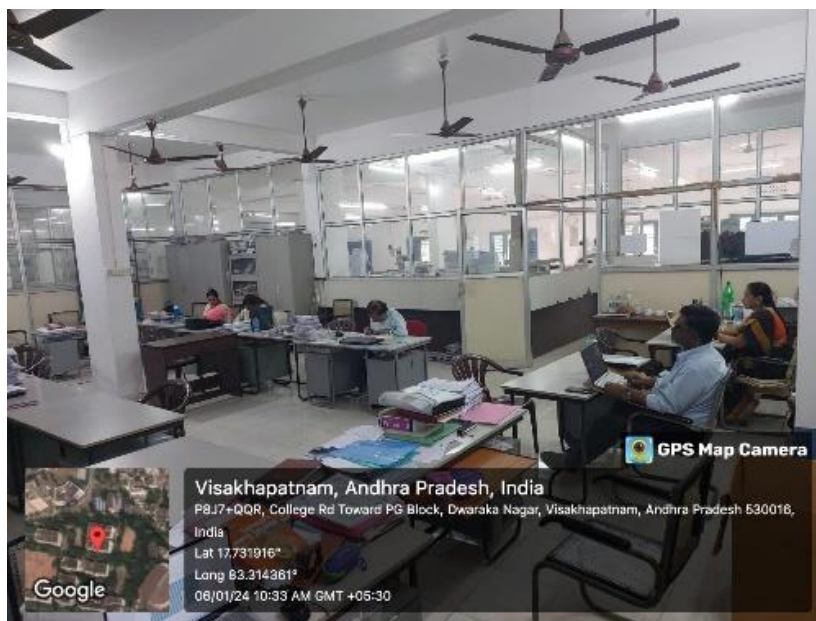
S.No.	ROOM No.	FACILITY NAME
1		CSE HOD ROOM
2		CSE STAFF ROOM
3	CF-3	Class Room - 1
4	CF-4	Class Room - 2
5	CF-5	Class Room - 3
9	CF-6	Class Room – 4
10	CF-7	Class Room – 5
11	CF-8	Class Room – 6
12	CF-9	Class Room - 7
13	CF-11	Computer Lab - 1
14	CS-11	Computer Lab - 2
15	CG-14	Computer Lab - 3

ROOM NO

PHOTOS



HEAD OF THE DEPARTMENT ROOM- DEPT. OF CSE



STAFF ROOM – DEPT. OF CSE

CLASS ROOMS

CF - 3



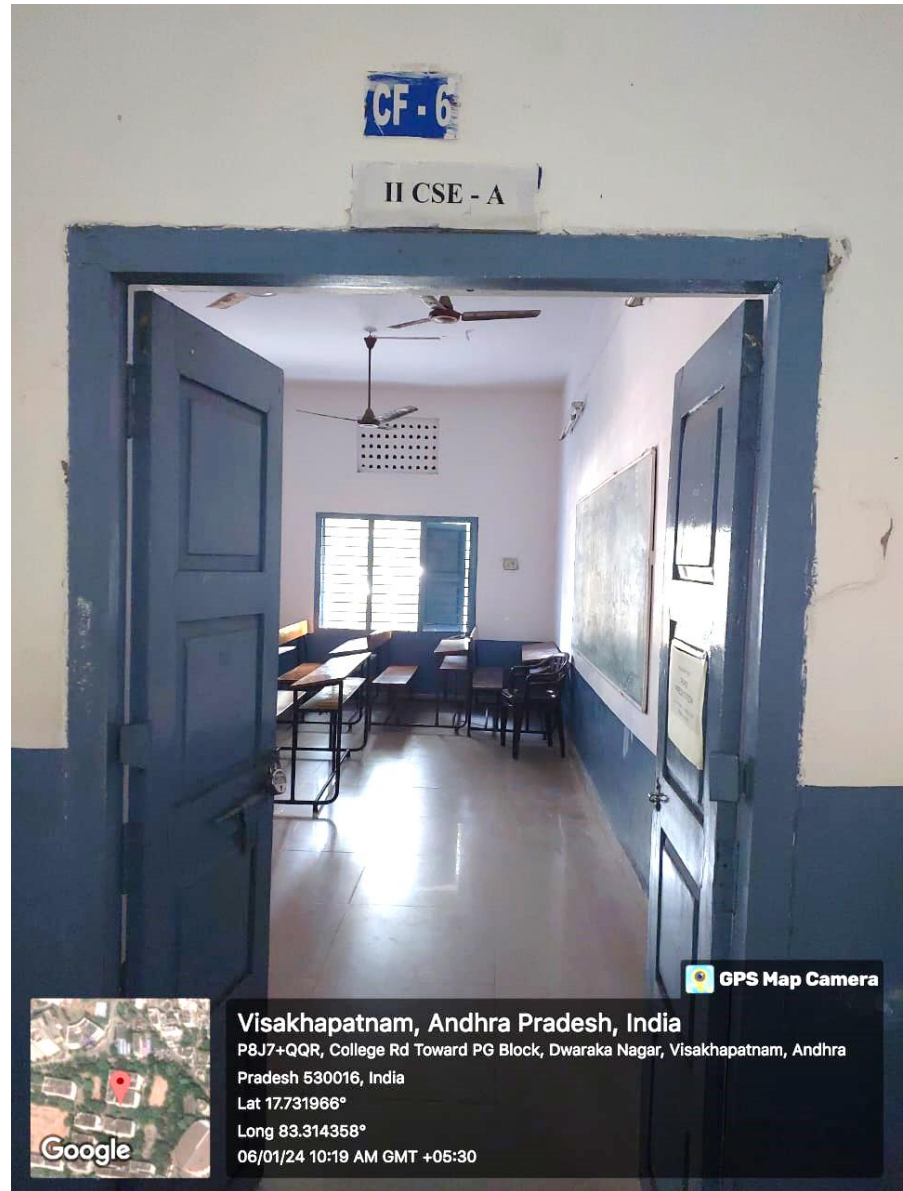
CLASS ROOM – II Year CSE-A

CF - 5



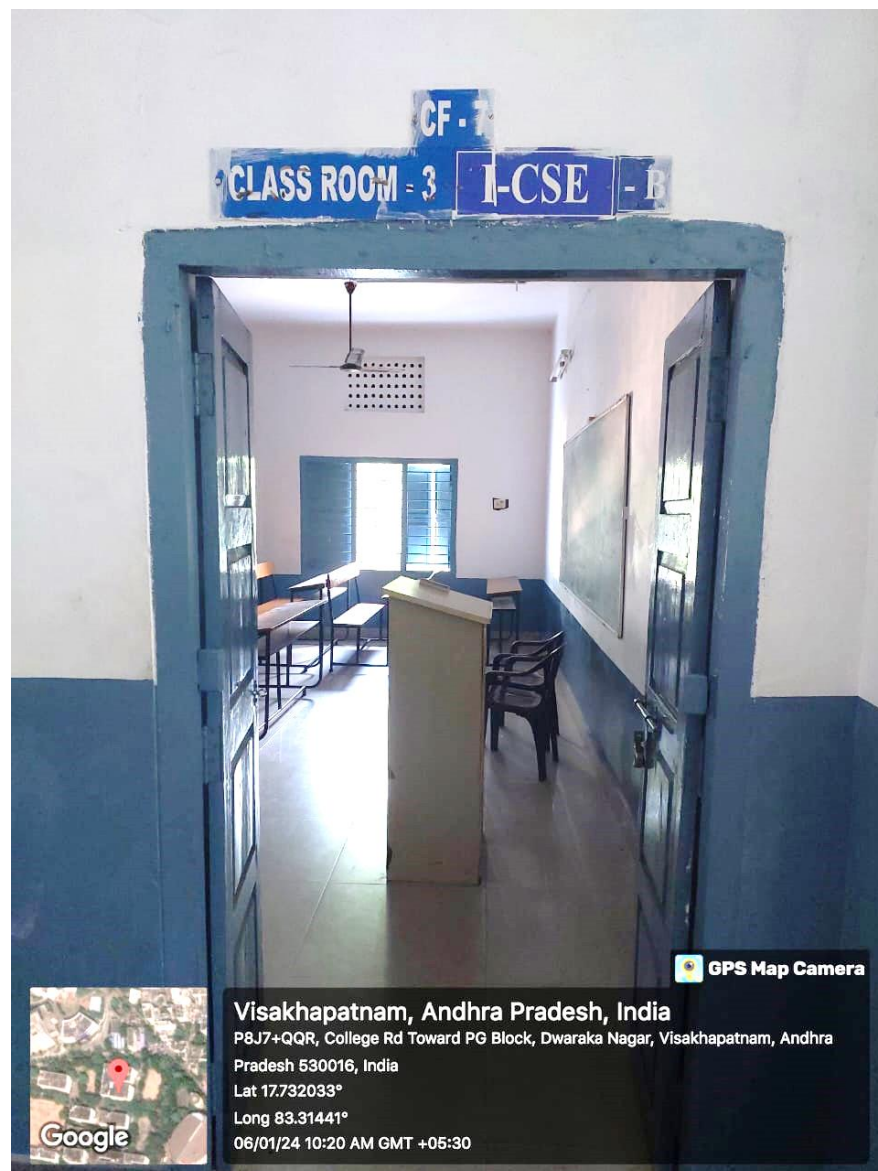
CLASS ROOM – IV Year CSE-A

CF - 6



CLASS ROOM – IV Year CSE-B

CF - 7



CLASS ROOM – III Year CSE-A

CF - 8



Visakhapatnam, Andhra Pradesh, India
P8J7+QQR, College Rd Toward PG Block, Dwaraka Nagar, Visakhapatnam, Andhra Pradesh 530016, India
Lat 17.731975°
Long 83.314385°
06/01/24 10:21 AM GMT +05:30

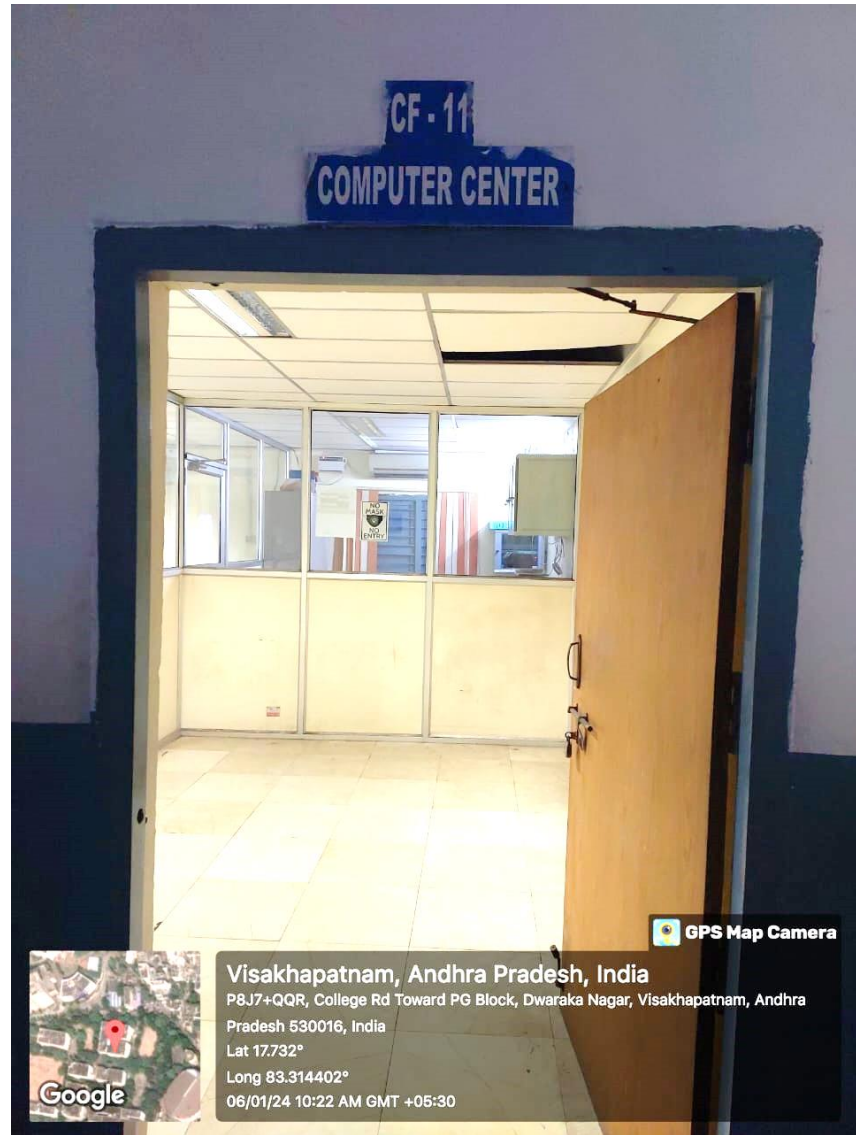
CLASS ROOM – III Year CSE-B

CF-9



CLASS ROOM – II Year CSE-B

CF-11



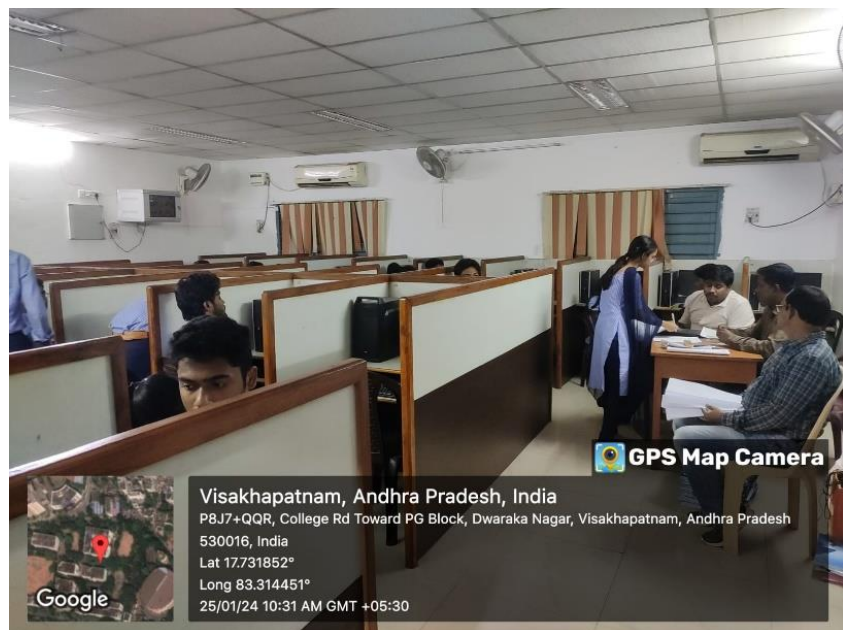
Computer Lab -1

CS-11



Computer Lab - 2

CG-14



Computer Lab – 3

Department of Electronics and Communication Engineering

LIST OF FACILITIES

S.No.	ROOM No.	FACILITY NAME
1	CS-13	ECE HOD ROOM
2	CS-	ECE STAFF ROOM
3	CS-16	Class Room - 1
4	CS-7	Class Room - 2
5	CS-6	Class Room - 3
6	CS-3	Analog Electronic Circuits Lab
7	CT-12	LIC IC's Lab Analog Communications Lab
8	CS-12	Micro Programming & Application Lab Digital Electronics Lab
9	CT-17	Microwave Engineering & Antenna Lab
10	CS-14	Digital Signal Processing Lab

ROOM NO	PHOTOS
---------	--------

CS-13



**HEAD OF THE DEPARTMENT ROOM
 DEPT. OF ECE**

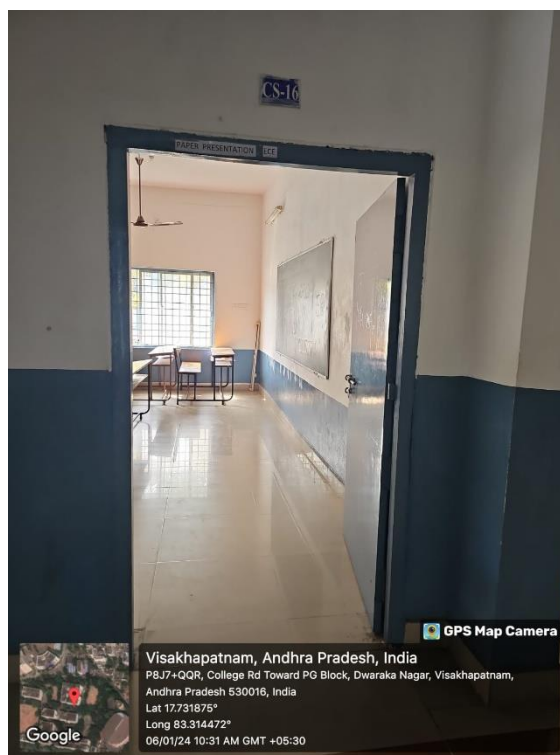
CS-



STAFF ROOM – DEPT. OF ECE

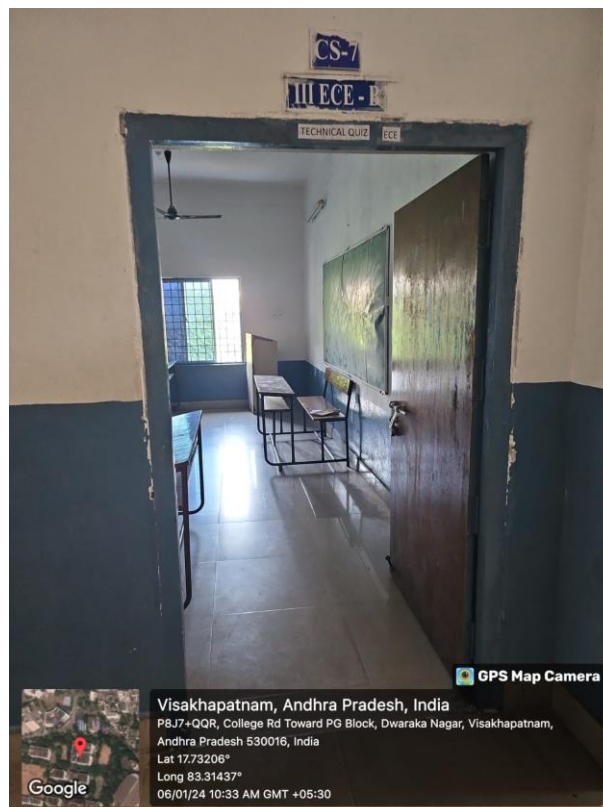
CLASS ROOMS

CS - 16



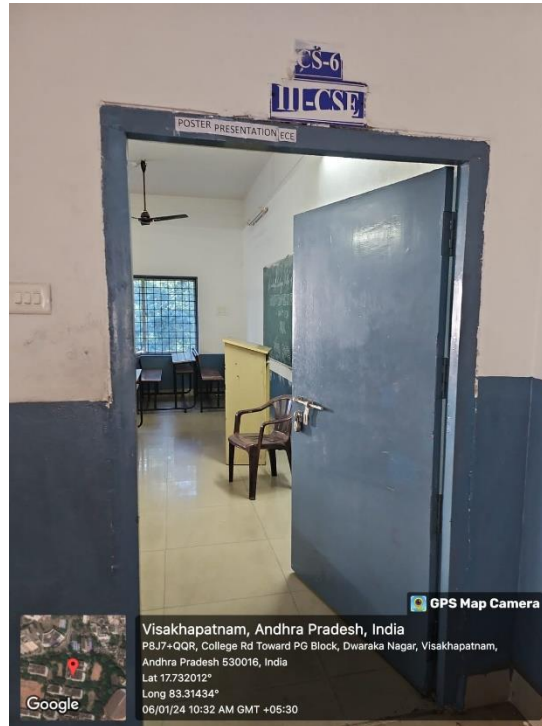
CLASS ROOM – II Year ECE

CS - 7



CLASS ROOM – III Year ECE

CS - 6



CLASS ROOM – IV Year ECE

DEPT OF ELECTRONICS AND COMMUNICATION ENGINEERING LABS

CS - 3



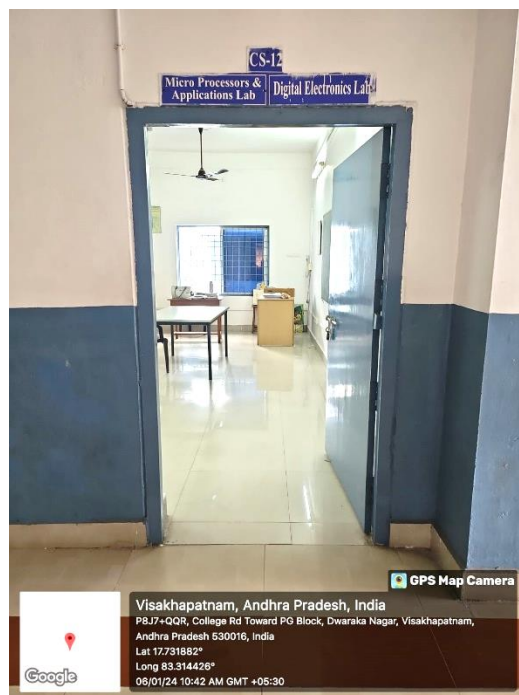
Analog electronic circuits lab

CT-12



LIC IC's Lab Analog Communications Lab

CS-12



**Micro Programming & Application Lab
Digital Electronics Lab**

CT-17



Microwave Engineering & Antenna Lab

CS-14



Digital Signal Processing Lab

Department of Electrical and Electronics Engineering

LIST OF FACILITIES

S.No.	ROOM No.	FACILITY NAME
1	CS-2	EEE HOD ROOM
2	CS-2	EEE STAFF ROOM
3	CT-14	Class Room - 1
4	CT-15	Class Room - 2
5	CT-2	Class Room - 3
6	CG-4	Electrical Machines Lab
7	CS-1	Networks and Measurement Lab
8	CT-1	Power Electronics and Control System Lab
9	CT-16	Power Simulation Lab

ROOM NO	PHOTOS
---------	--------

CS-2



HEAD OF THE DEPARTMENT ROOM– DEPT. OF EEE

CS-2



STAFF ROOM – DEPT. OF EEE

CLASS ROOMS

CT - 14



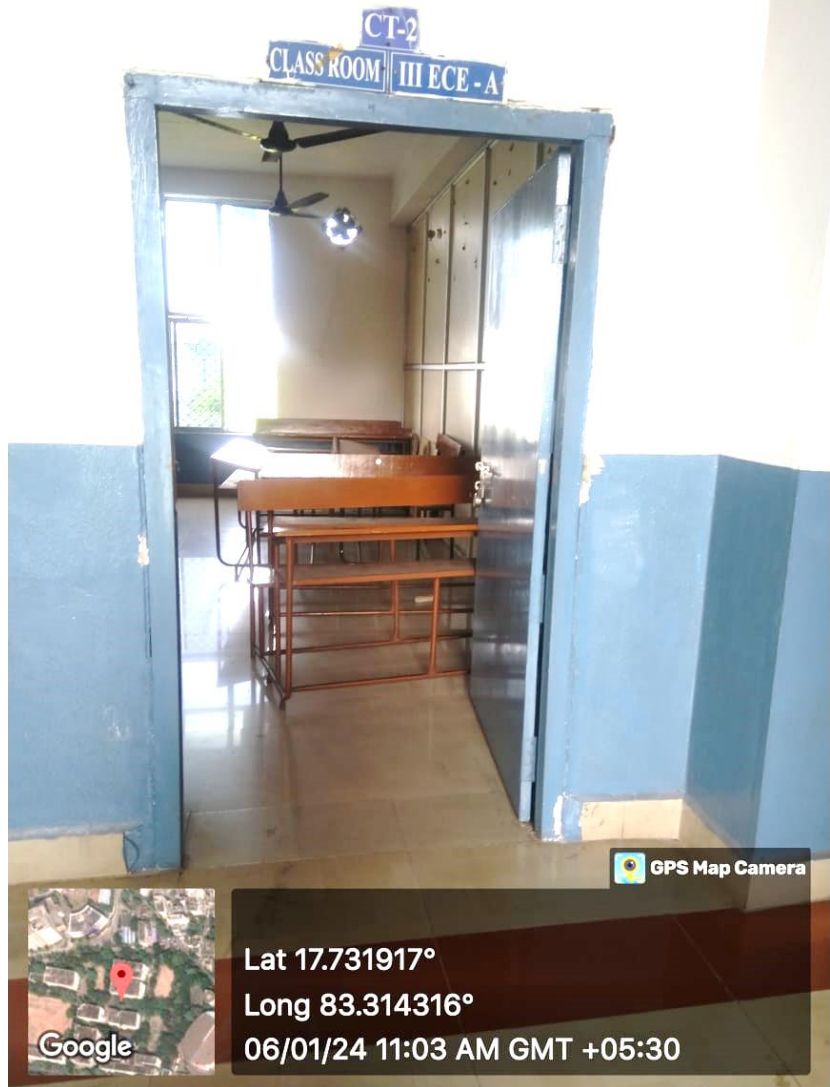
CLASS ROOM – II Year EEE

CT - 15



CLASS ROOM – III Year EEE

CT - 2



CLASS ROOM – IV Year EEE

CG - 4



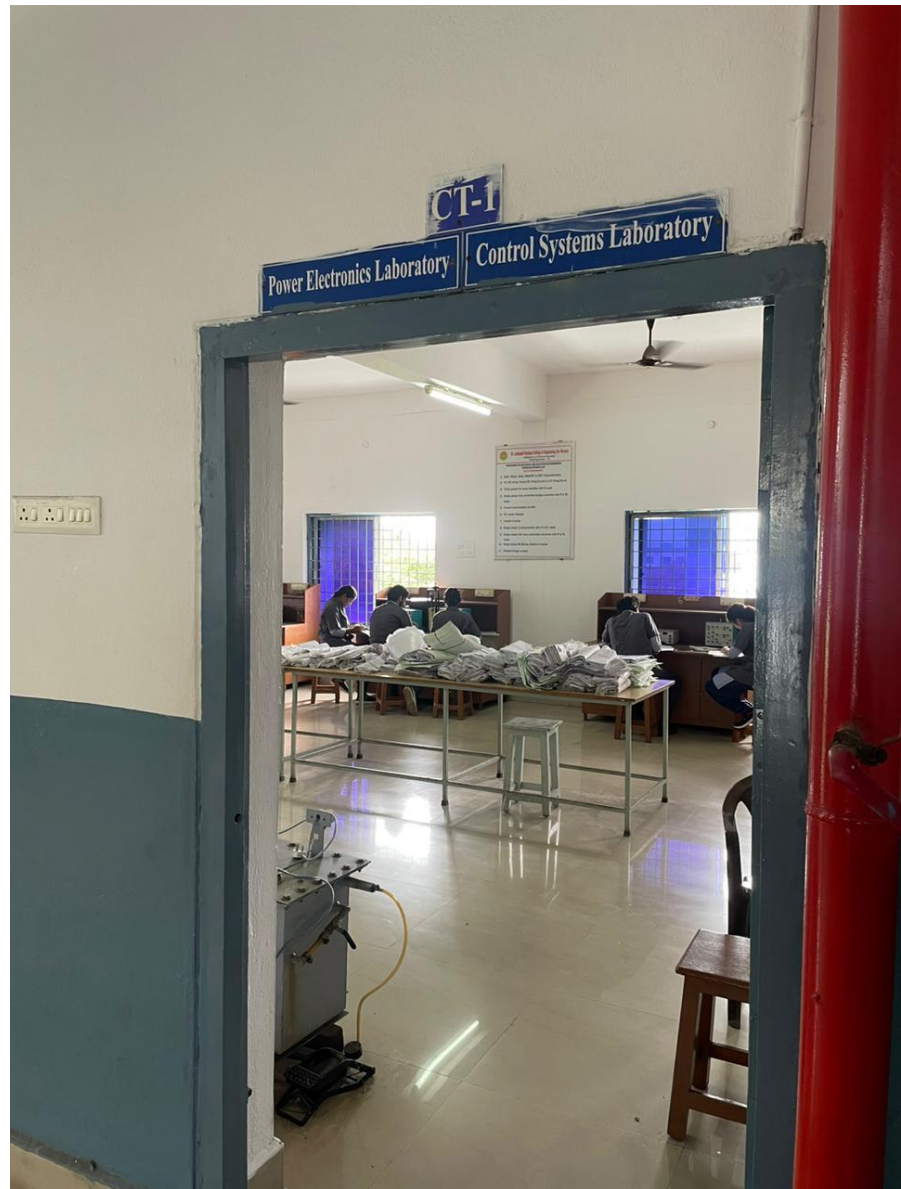
Electrical Machines Lab

CS-1



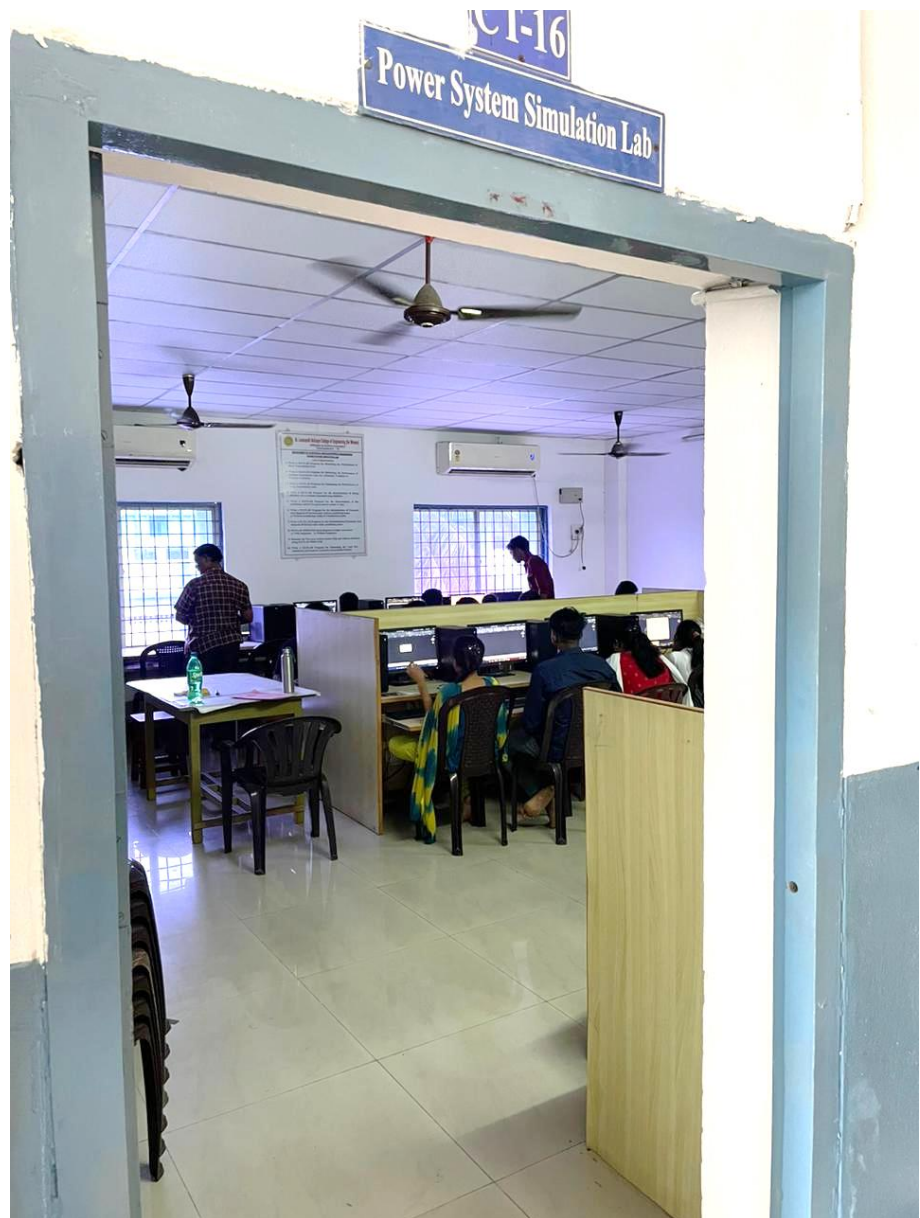
**Networks and Measurement Lab
and Electrical Workshop**

CT-1



Power Electronics and Control System Lab

CT-16



Power Simulation Lab

List of Facilities for Sports Activities

S. No.	Name of the Facility
1	Badminton Court
2	Basketball Court
3	Hand ball Court
4	High Jump Pit
5	Long Jump Pit
6	Kho Kho Court
7	Cricket Field
8	200 mts Track and Field (for Athletics, Cricket, Football & Hockey)
9	Indoor Weight Lifting Room
10	Athletics Field
11	Kabaddi Court
12	Indoor Table Tennis Room
13	Throw Ball Court
14	Volley Ball Court
15	Indoor Weight lifting and Power lifting Room



Badminton Courts



Basketball Court



Hand ball Court



High Jump Pit





Long Jump Pit



Kho Kho Court





Cricket Field



200 mts Track and Field (for Athletics, Cricket, Football & Hockey)



Indoor Weight Lifting Room



Athletics Field



Kabaddi Court



Indoor Table Tennis Room



Throw Ball Court

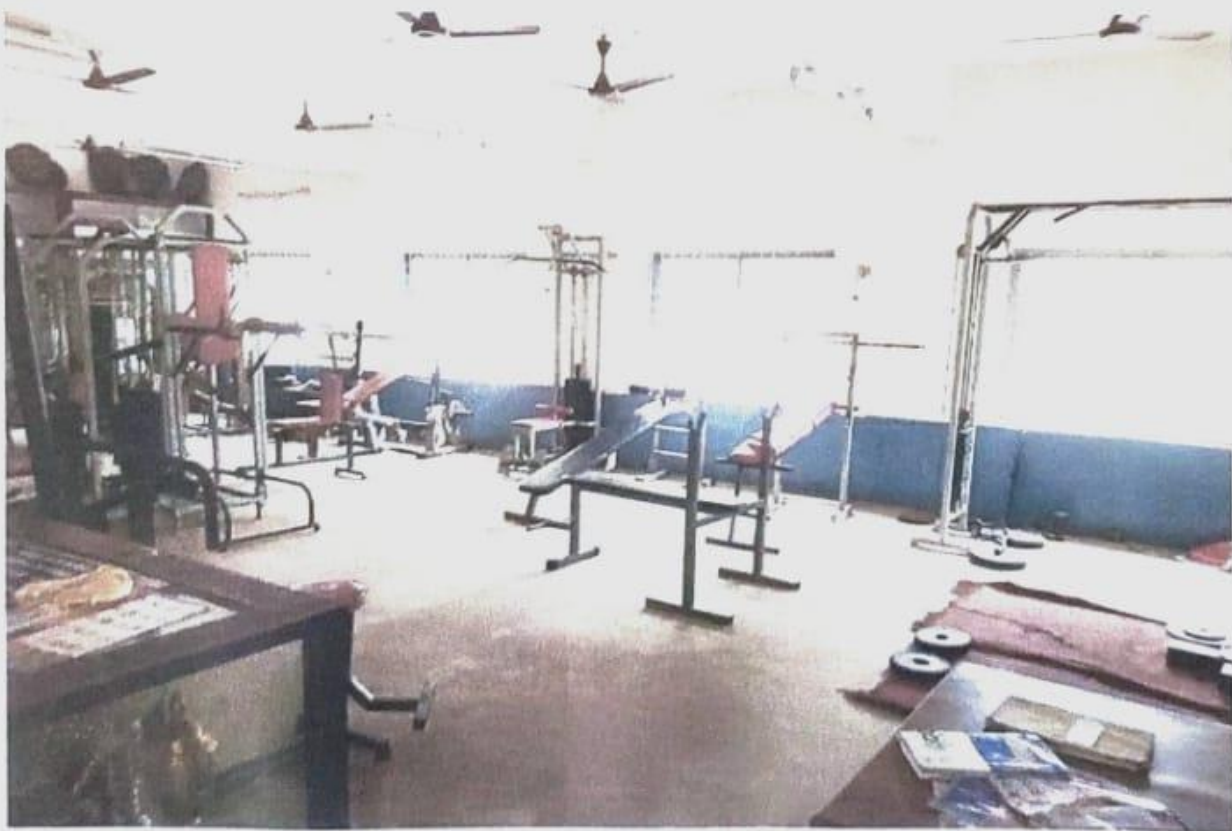
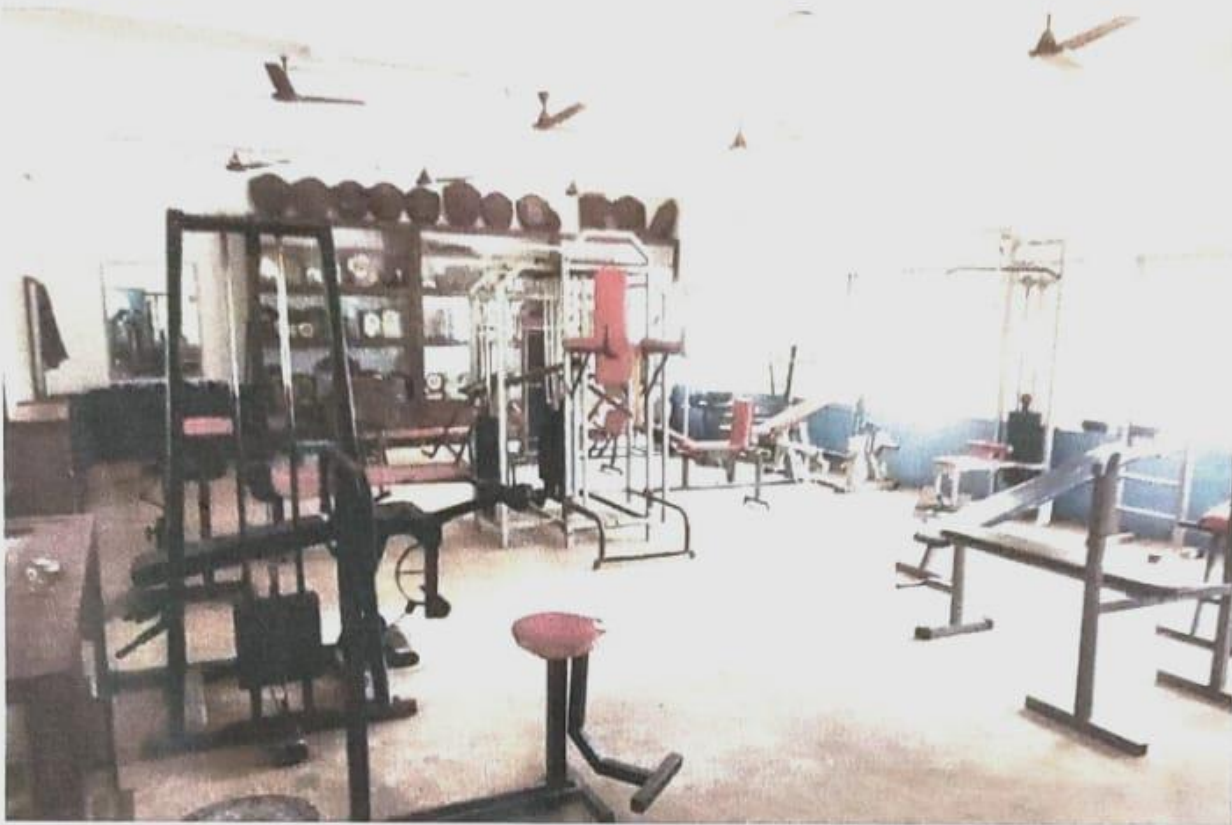



Volley Ball Court



Indoor Weight lifting and Power lifting Room

Gymnasium Room




Principal
Dr. Lankapalli Bultayya College of Engineering
D.No.52-14-75, Resapuvanipalem
Visakhapatnam-530013, Andhra Pradesh